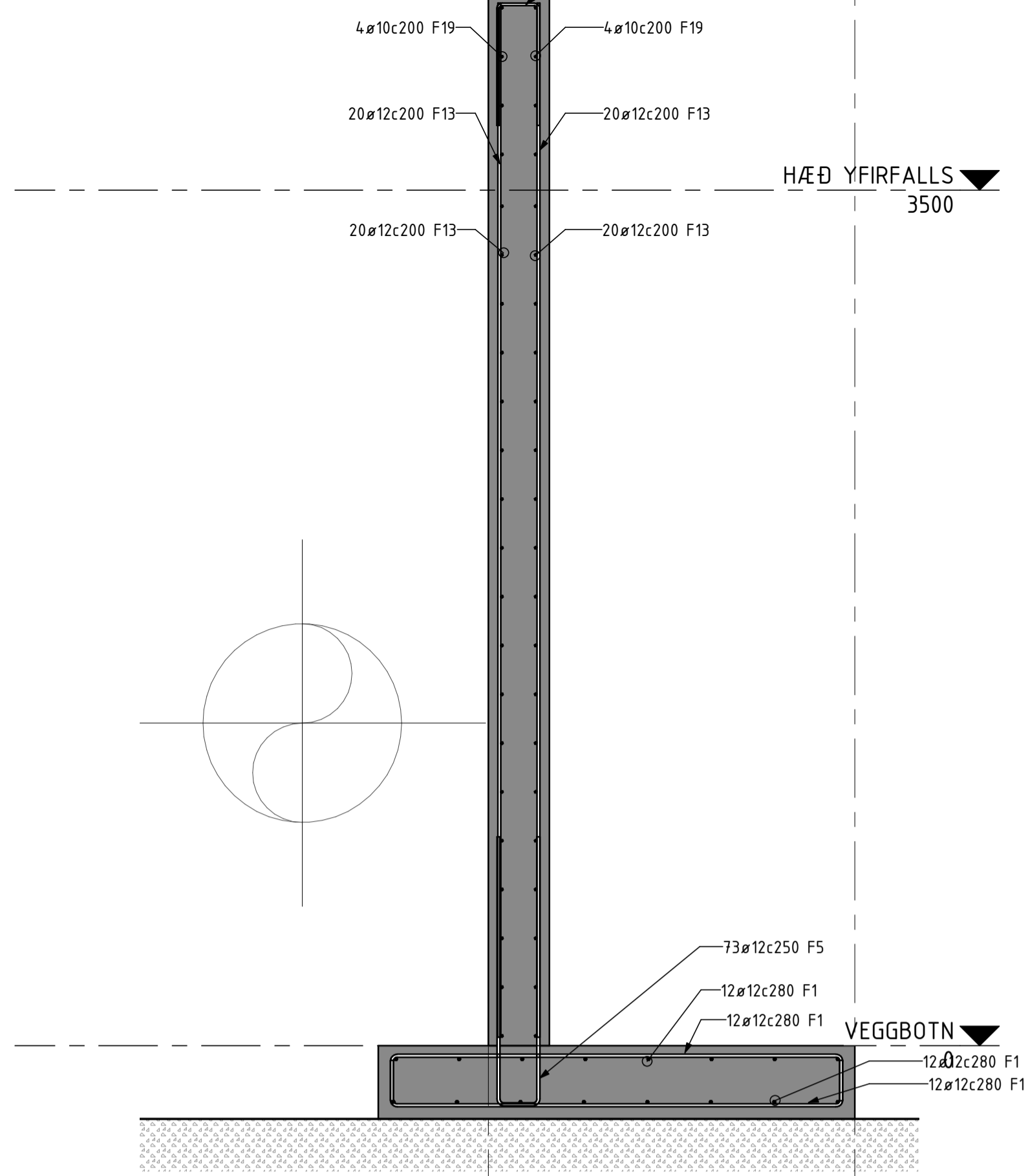
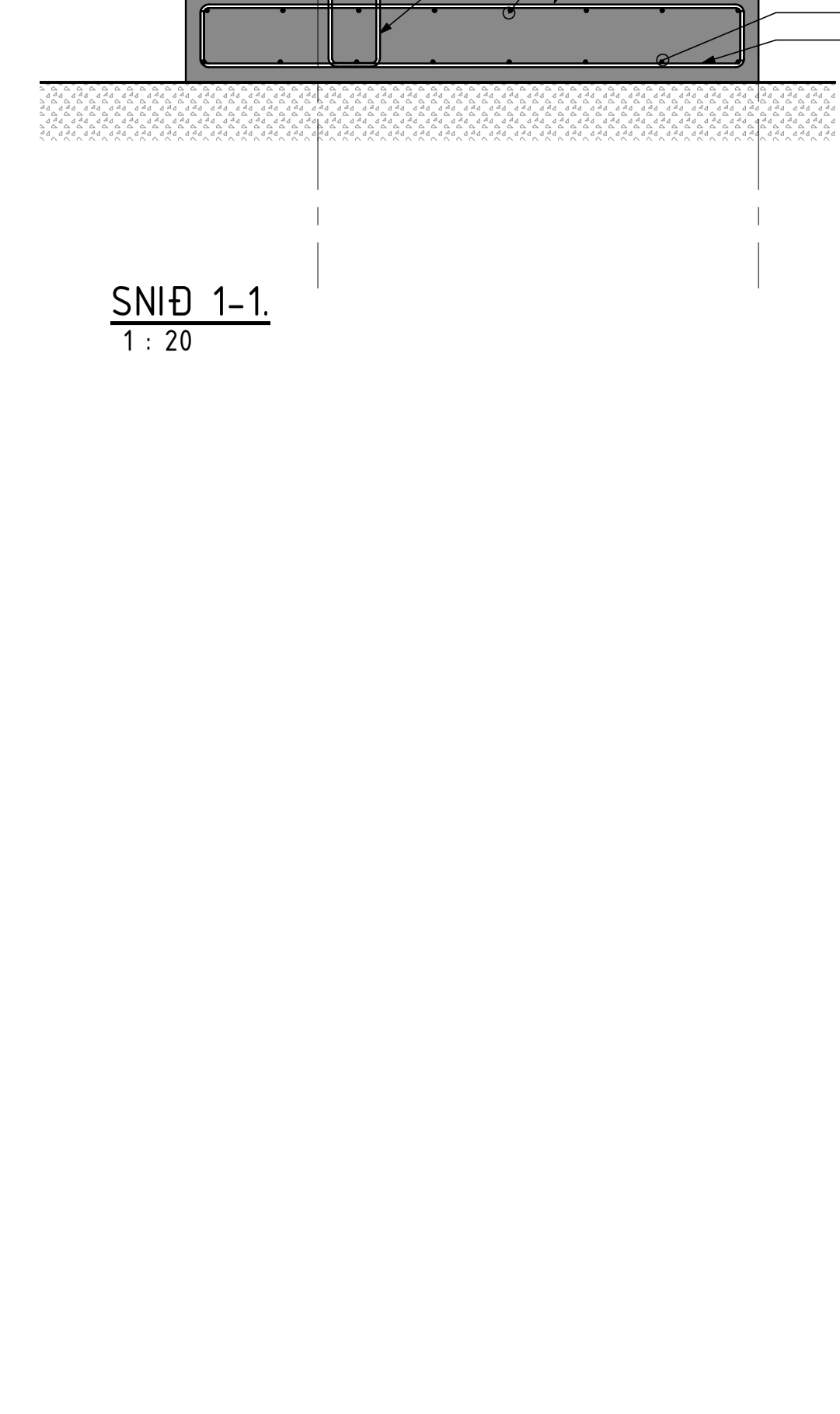


SNID 3-3.  
1 : 20



SNID 4-4.  
1 : 20



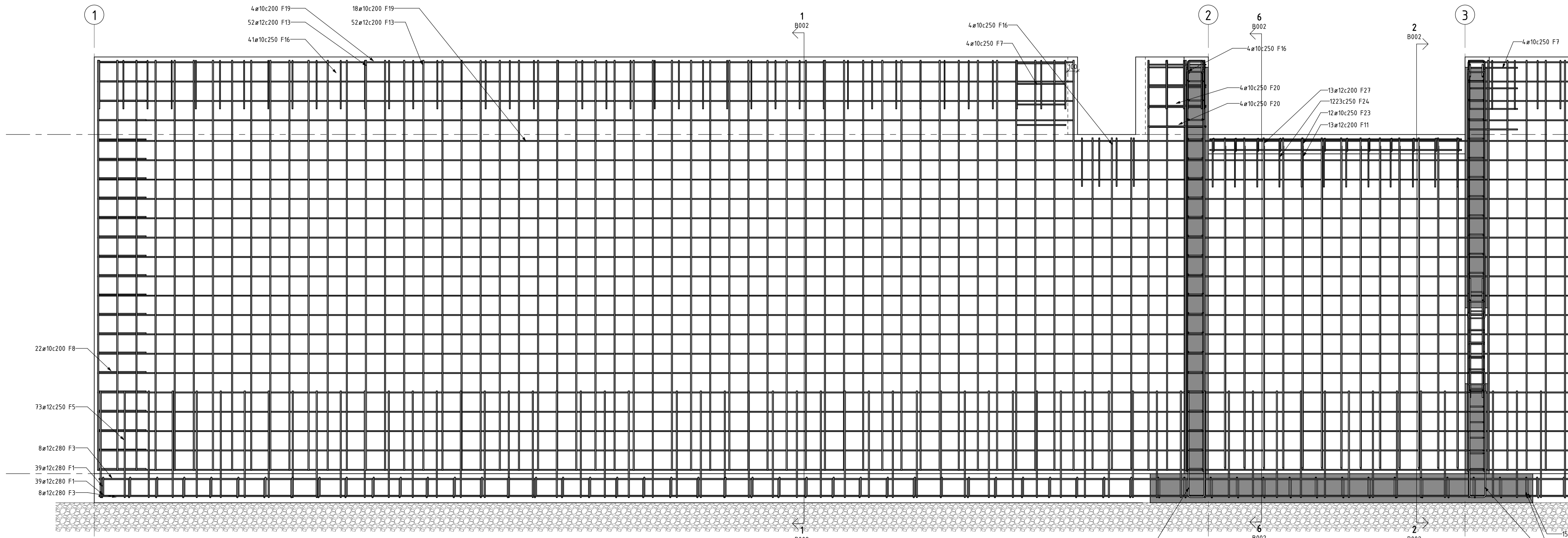
SNID 1-1.  
1 : 20



SNID 2-2.  
1 : 20

JÁRNALISTI

Verkhliut	Pos.nr.	Fjöldi	Diam.	Forr.
Fótplata	F1	102	12 mm	21
Fótplata	F2	30	12 mm	21
Fótplata	F3	26	12 mm	LM
Fótplata	F4	16	12 mm	00
Tenging við vegg	F5	93	12 mm	21
Tenging við stöpul	F6	28	12 mm	21
Í kringum rör	F7	65	10 mm	21
veggendum á stíflu	F8	44	10 mm	21
Veggtoppur	F9	1	10 mm	21
Veggur, undir yfir.opi	F10	6	12 mm	00
Veggur	F11	13	12 mm	00
Veggtegjar, horn	F12	44	10 mm	21
Veggur	F13	152	12 mm	00
Veggtoppur við stöpul	F14	14	12 mm	21
Veggur við stöpul	F15	8	10 mm	00
Veggtoppur	F16	93	10 mm	21
Veggtoppur	F17	1	10 mm	21
Vegghorn lárétt	F18	20	10 mm	21
Veggir	F19	95	10 mm	LM
Vegghorn	F20	8	10 mm	21
Stöpull	F21	7	10 mm	31
veggbending yfir stöpli	F22	6	10 mm	00
Yfirfalls kantur.	F23	0	10 mm	
Yfirfalls kantur, vegg.	F24	0	10 mm	
Skáveggur, toppur	F25	4	12 mm	25
í kringum gat	F26	2	12 mm	25
í kringum gat	F26	2	12 mm	25
í kringum gat	F26	2	12 mm	25
í kringum gat	F26	2	12 mm	25
Veggir	F27	13	12 mm	00
Grand total:		195		
		898		



SNID 5-5.  
1 : 20